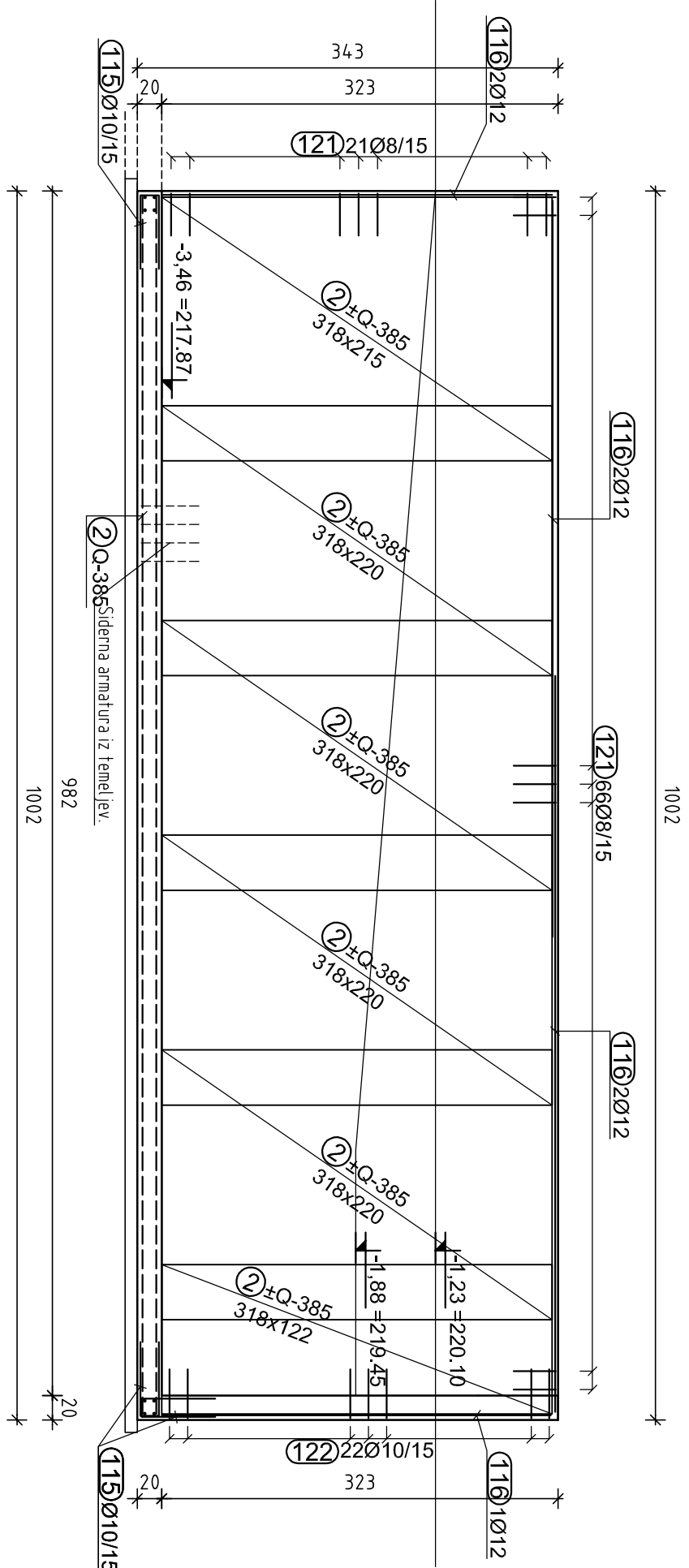
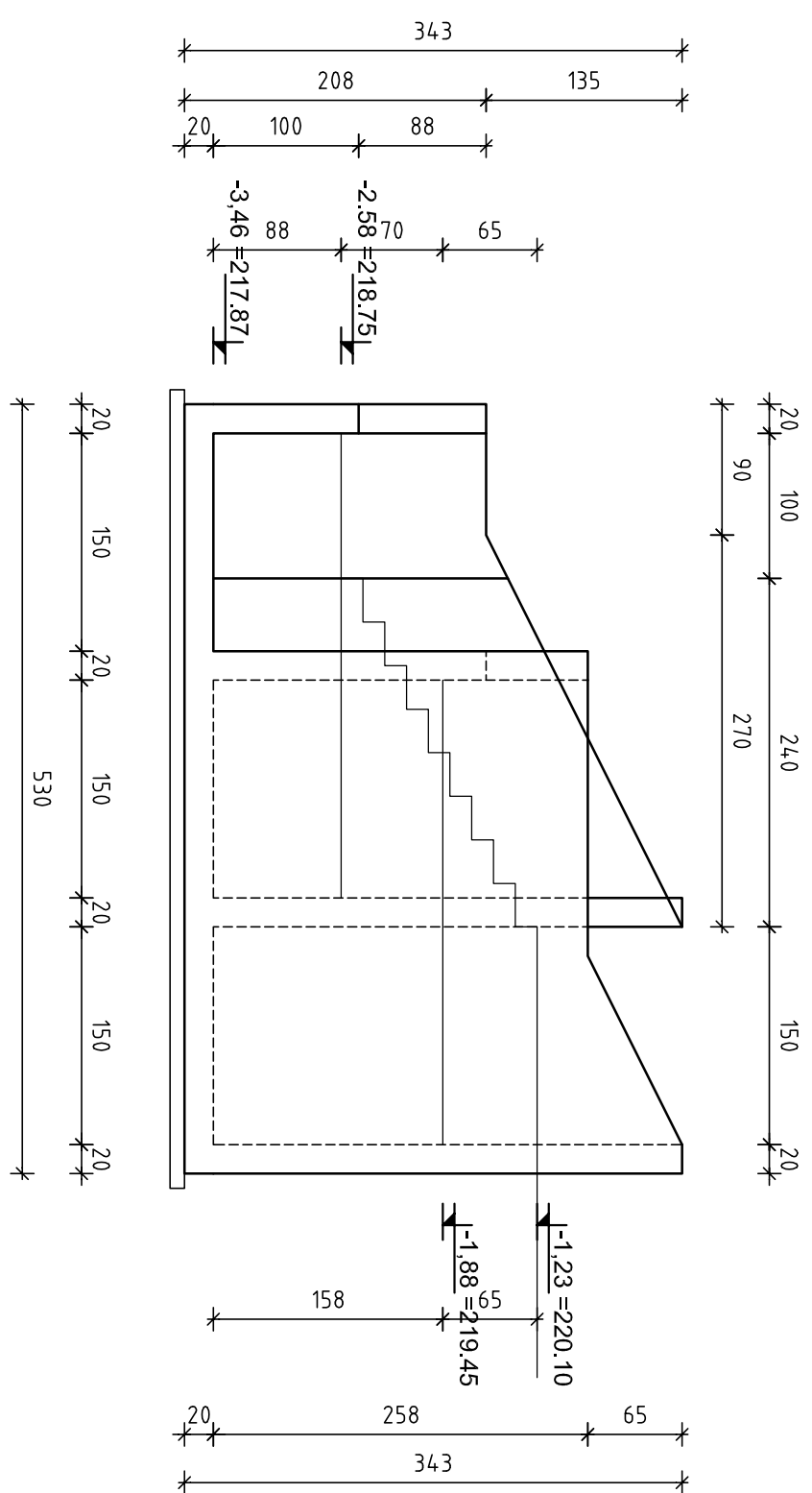


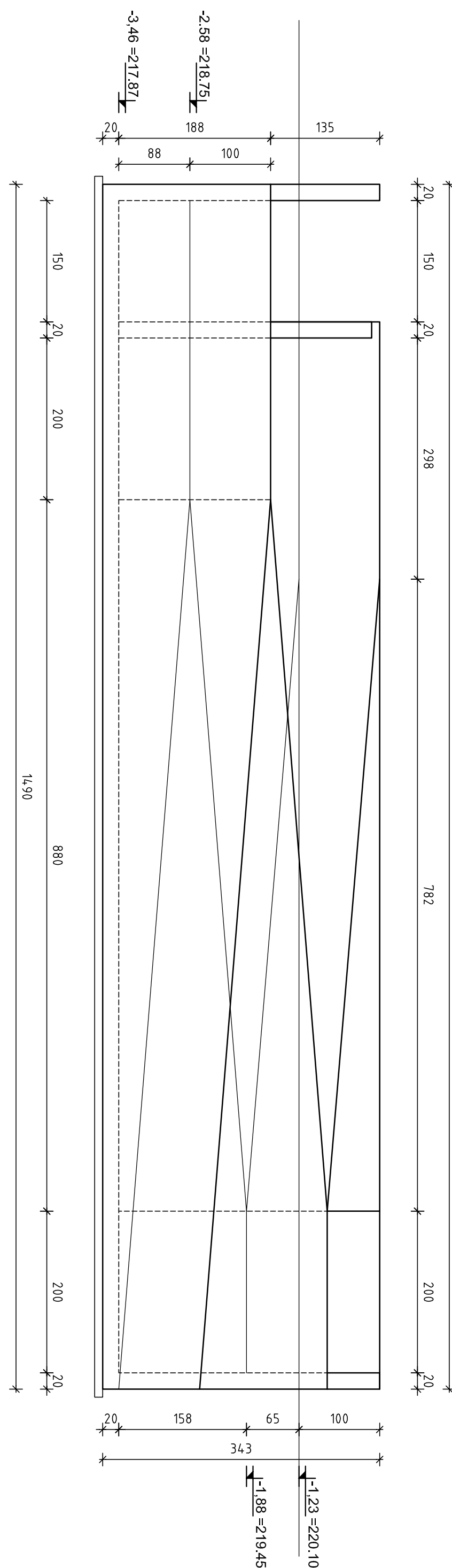
STENA - S4



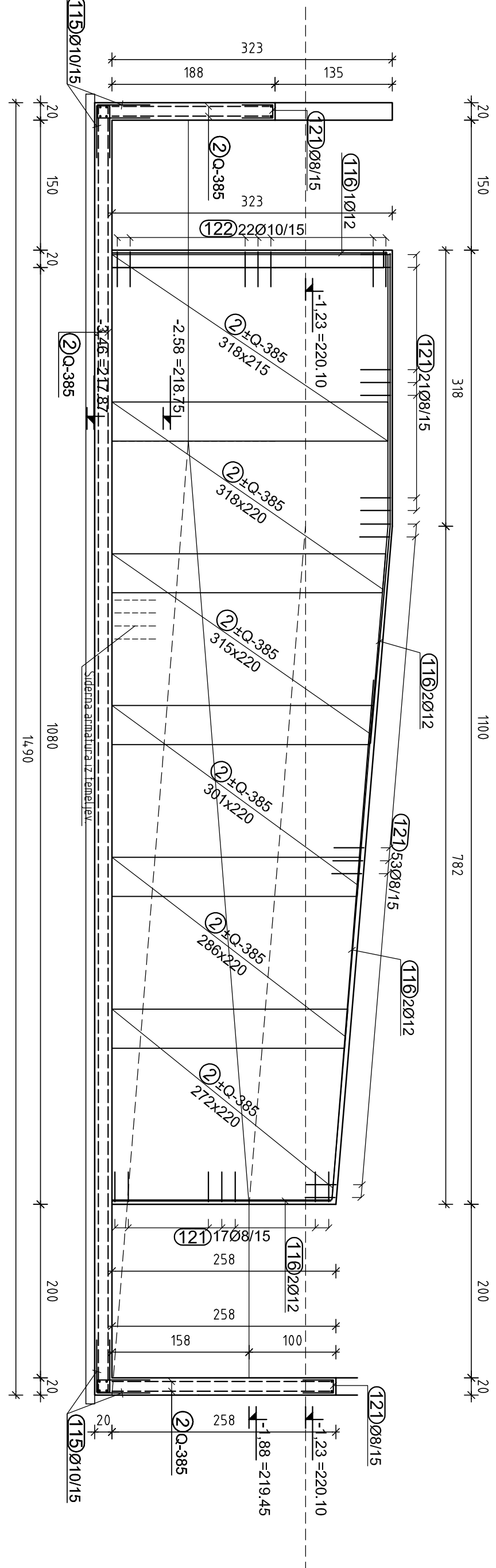
RAMPA ZA INVALIDE - STRANSKI POGLED



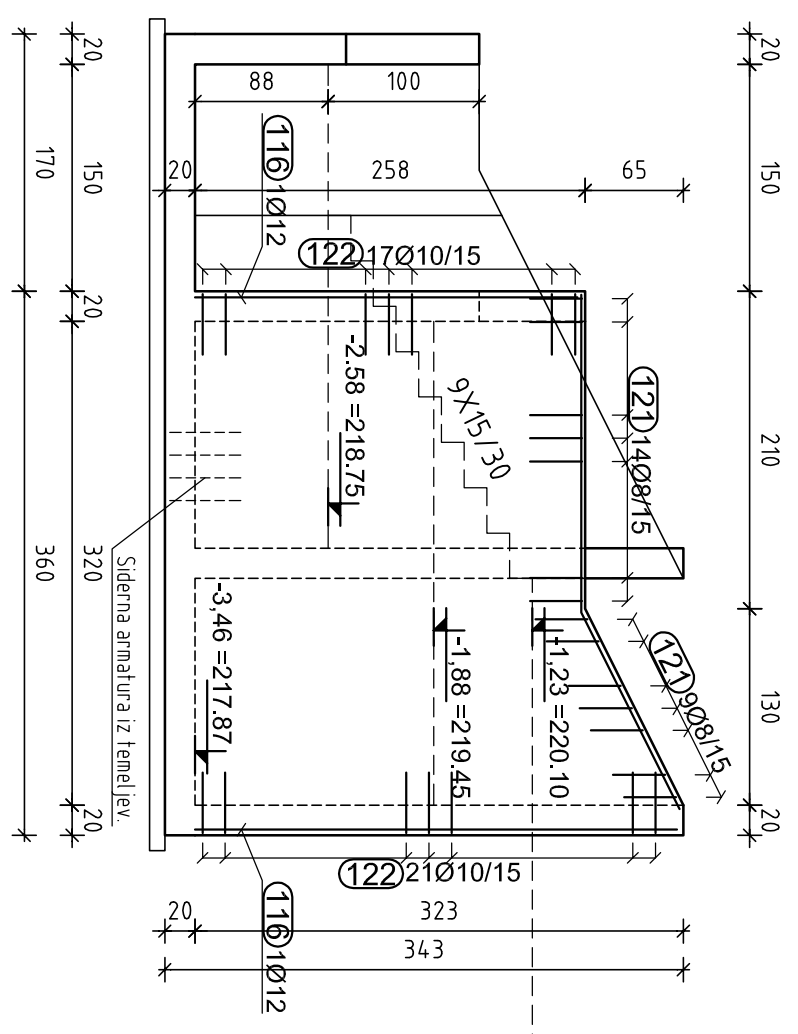
RAMPA ZA INVALIDE - VZDOLJNI POGLEDE



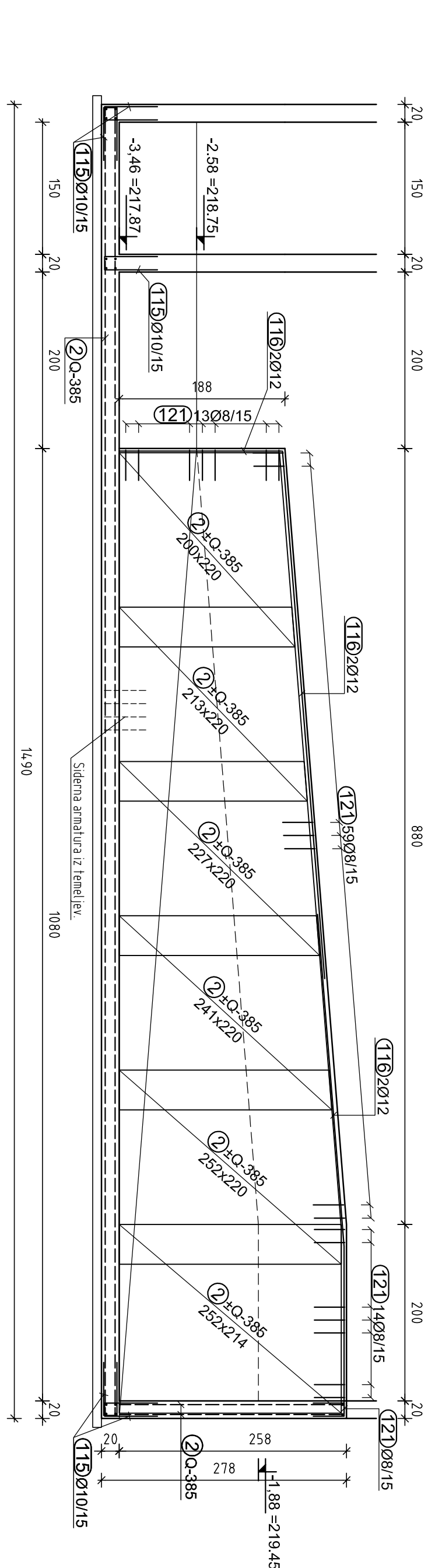
STENA - S3



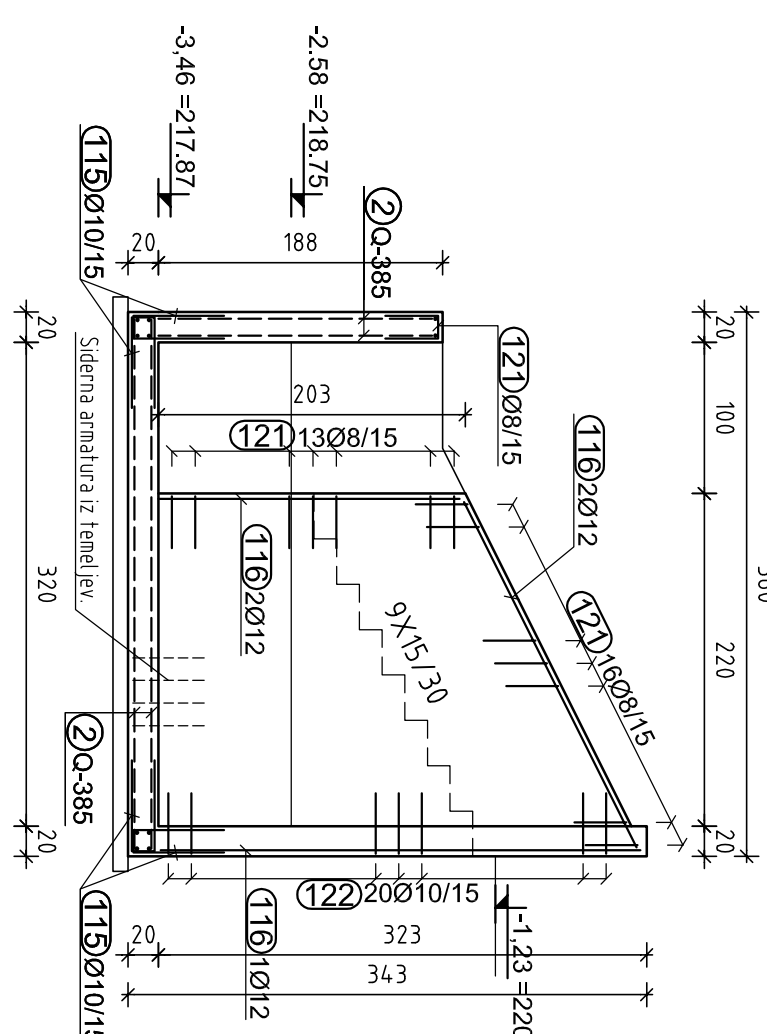
STENA - S7



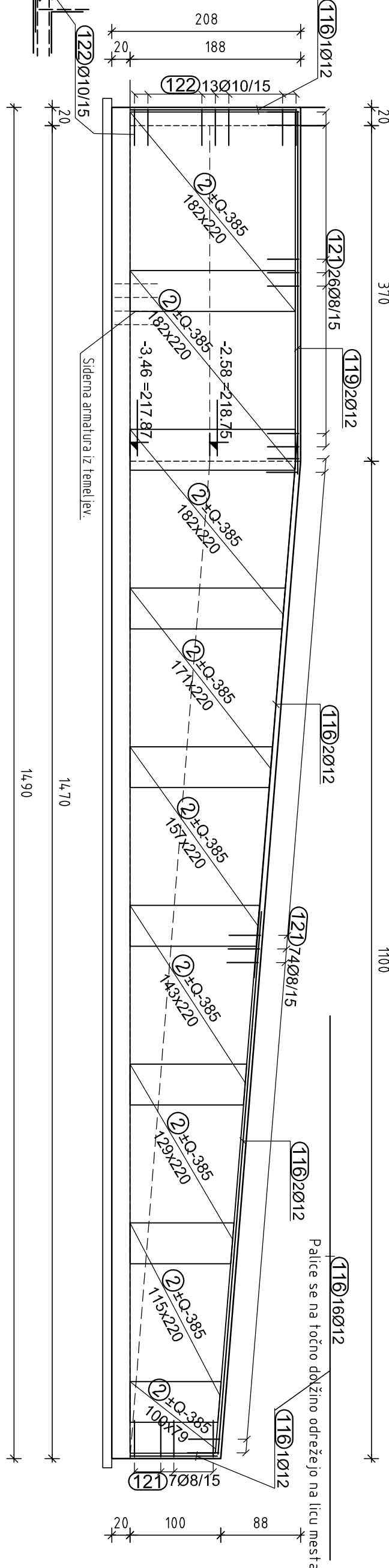
STENA - S2



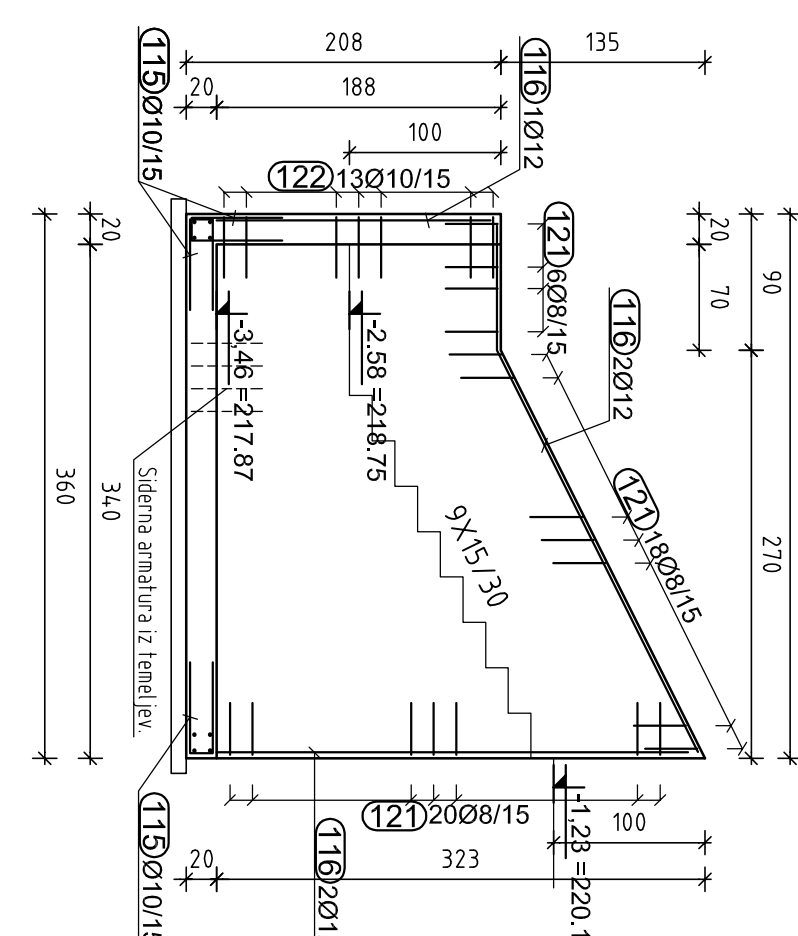
STENA - S6



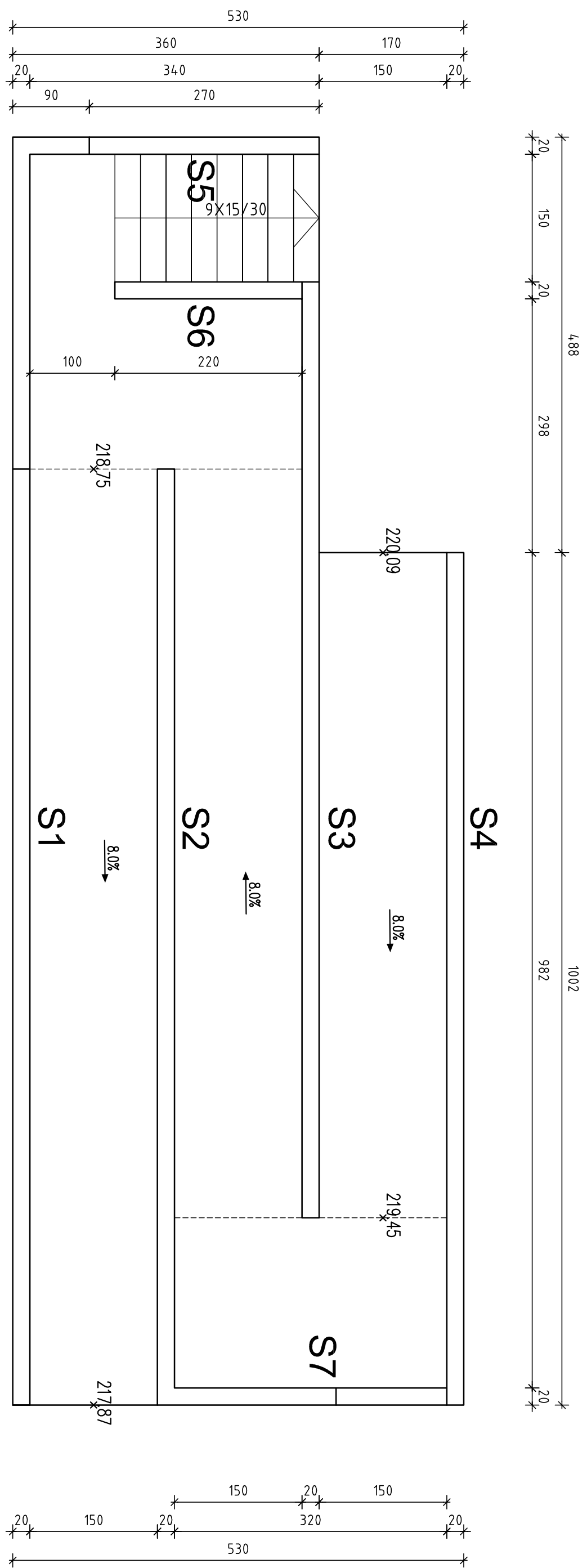
STENA - S1



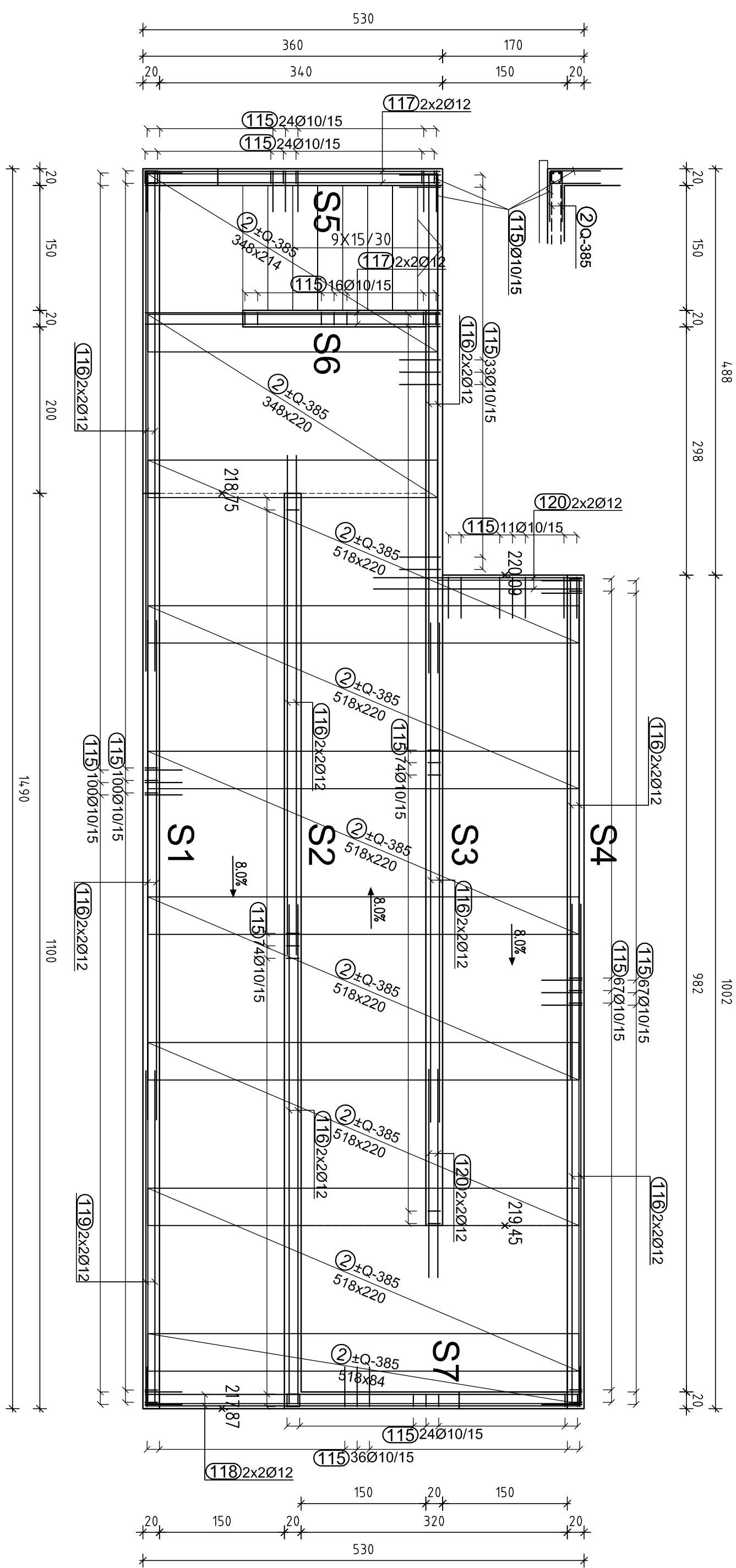
STENA - S5



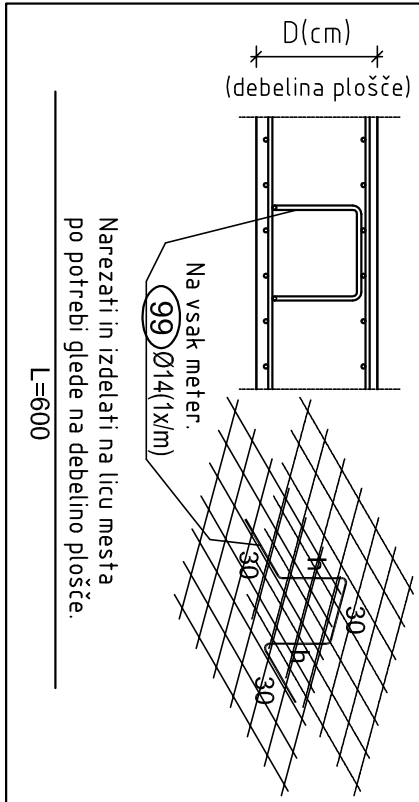
TLORIS RAMPE ZA INVALIDE



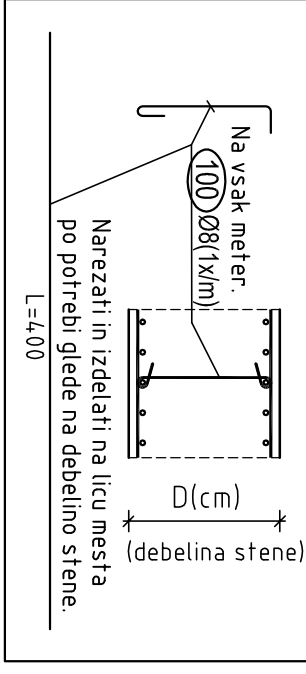
TALNA PLOŠĆA



DETAIL IZVEDBE POVEZOVALNE ARMATURE



DETAIL IZVEDBE POVEZOVALNE ARMATURE



OPOMBE :

-BETON C 25/30 XC2-PV-

-ARMATURA B500

-ZASCIJNI SLOJ BEJONA NAD ARMAJURO JE 2,5cm

- pri opaženju prebojev in odprtih prever
- načrte elektro in strojnih instalacij

- preklap armaturnih palic znaša 50xØpalice merjeno v c
- v enem preseku se lahko preklapa le 50% palic, zato

je potrebno polagati vsako drugo v obratni smeri

[illegible]